

609 Main at Texas

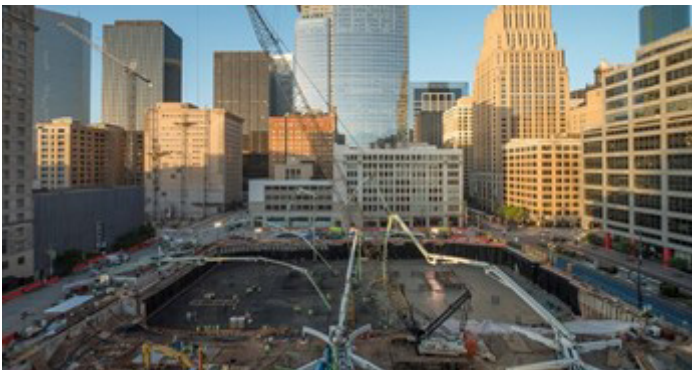
Houston, Texas



STORIES BUILT



The 609 Main at Texas is a highly visible landmark in the heart of Houston's central business district. The 50-level, Class A "trophy" office tower is LEED Platinum-certified and has a unique glazed façade that reflects the sky and sweeps along the changing elevations of the boulevard. The building features a hotel-style lobby with networking spaces, a 300-person conference center and event space, a fitness facility, rooftop gardens and street-level retail space. It also has 12 levels of parking below the office building and a free-standing 12-level parking garage adjacent to the building, with two of the levels below grade.



Ceco provided concrete formwork services for this tower and garage project, working with the project team to take maximum advantage of the site's tight downtown footprint. By using wide module pan construction for the office tower, the Ceco team was able to maximize efficiency to follow an aggressive schedule. For instance, Ceco engineers and field forces customized the longform pan system to achieve an eight-day cycle per floor, with each office level measuring approximately 28,000 square feet.

The wide module, one-way joist system made possible the structural engineer's desired design loads and reduced vibration. Pan construction also creates long slab spans, which enabled the flexible, open floor space needed for the office tower. For the parking garage, Ceco used beam-and-slab concrete formwork.

Other formwork systems used for this project included perimeter tables and interior beam tables for beams and girders, soffits and support. In addition, Ceco used a perimeter cantilevered debris netting system to catch potential falling objects, thereby protecting passersby on the busy downtown streets below. In all, Ceco provided formwork services for elevated decks, columns, sloping columns, shear walls and one-sided basement walls, which included placing concrete in the columns and walls.

FAST STATS

- Project Owner:** Hines
- General Contractor:** Harvey Builders - Houston
- Designer/Architect:** Pickard Chilton & Kendall / Heaton Architects
- Structural Engineer:** Cardno Haynes Whaley
- Ceco Scope:** Formwork services
- Ceco Project Manager:** Brett Brown
- Ceco Superintendent:** Martin Ledezma
- Ceco Engineer:** Floyd Golding (Engineer); Vince Casas (Detailer)
- Date Completed:** 2017